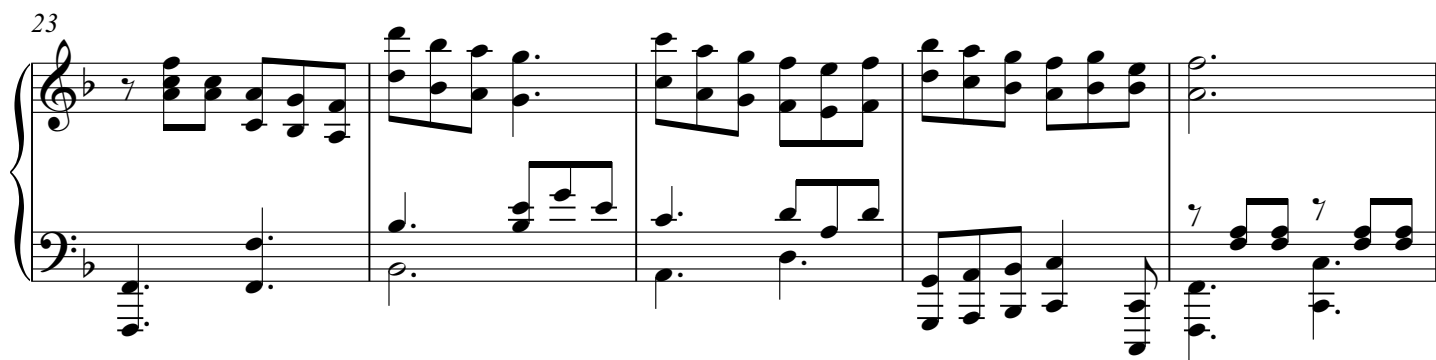
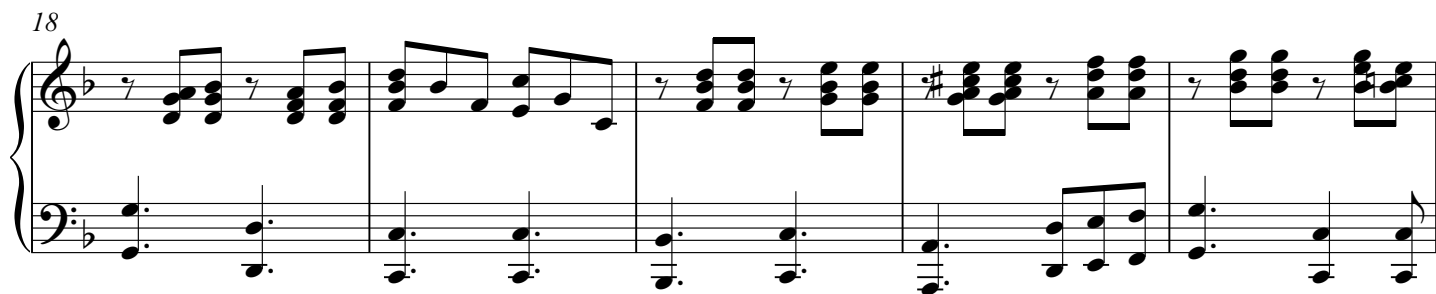
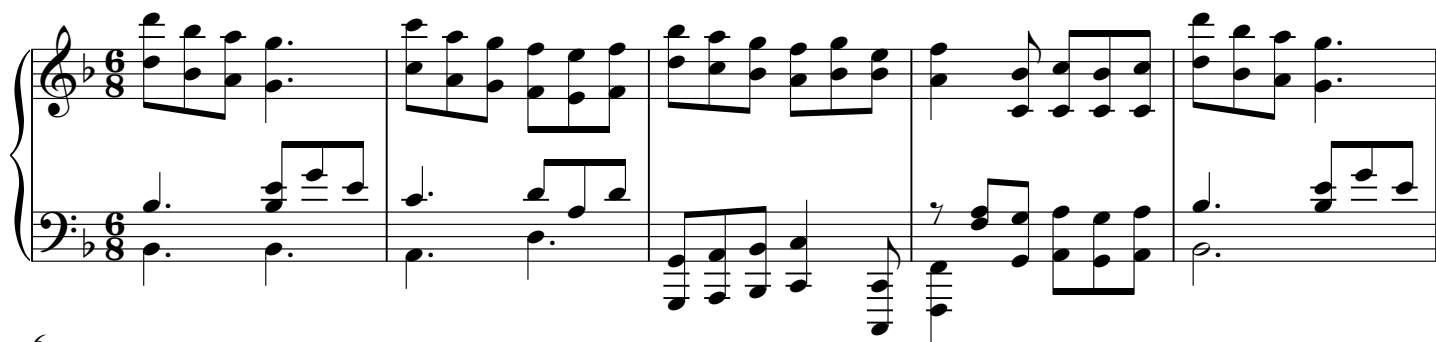


Piano

# В эту прекрасную, чудную ночь...

Слова и музыка:  
Сергей Воробьев



28 2

Measures 28-32 of the piano score. The right hand features a series of chords and eighth-note patterns, while the left hand provides a steady accompaniment with eighth notes and chords. A box containing the number '2' is positioned above measure 28.

33

Measures 33-38 of the piano score. The right hand continues with complex chordal textures and eighth-note runs. The left hand maintains a consistent rhythmic pattern. A flat accidental is visible in measure 33.

39

3

Measures 39-44 of the piano score. The right hand features a mix of chords and eighth-note patterns. The left hand continues with a steady accompaniment. A box containing the number '3' is positioned above measure 39.

45

Measures 45-49 of the piano score. The right hand continues with complex chordal textures and eighth-note runs. The left hand maintains a consistent rhythmic pattern. A flat accidental is visible in measure 45.

50

Measures 50-54 of the piano score. The right hand features a mix of chords and eighth-note patterns. The left hand continues with a steady accompaniment. The piece concludes with a double bar line in measure 54.